

## District Scale Lithium Exploration

- ◆ In 2023 Surge Battery Metals Inc. discovered the highest grade district scale lithium deposit in North America right beside claims held by Peloton in Nevada since 2018
- ◆ Systematic exploration shows Peloton's entire 37 sq. km, property is also prospective for a district-scale lithium deposit

## Corporate Overview

Peloton's exploration portfolio includes the North Elko Lithium Project, comprised of 442 mining claims (37 sq km or 14.25 sq miles), and located immediately adjacent to the major lithium discovery made by Surge Battery Metals Inc. (Surge) in northeastern Nevada. Peloton also holds a gold exploration project on the Carlin Trend in Nevada, and a non-controlling interest in a copper porphyry project near Butte, Montana.

## North Elko Lithium Project

The North Elko Lithium Project (NELP) is located about 70 kilometers (43.5 miles) north-east of Wells, Nevada, and consists of 442 mineral claims covering 37 sq km (14.25 sq miles). Surge is immediately adjacent and tied onto the west portion of NELP and has made the highest grade district scale lithium discovery in North America with an Inferred Resource of 11.24 Mt of Lithium Carbonate Equivalent (LCE) at 3,010 ppm Lithium (Li).

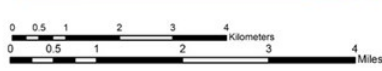
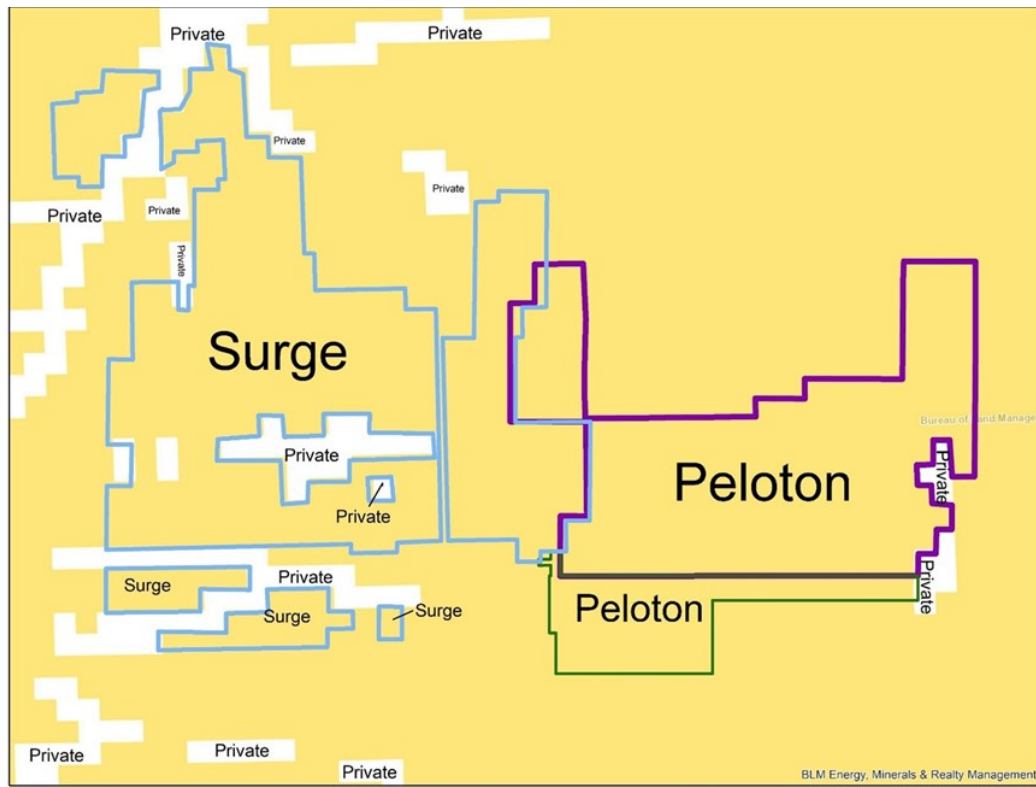
Since the Surge discovery was made in early 2023, Peloton has conducted a systematic series of exploration programs on NELP and as data was collected, Peloton increased its ground position from an original 44 claims to a total of 442 claims currently or 37 sq km (14.25 sq miles) Surge holds 44 square km (17 sq miles) and Peloton and Surge are currently the two largest claim holders in the area.

Peloton's exploration work has included the reprocessing of data from an airborne hyperspectral survey the company had previously conducted over the area. A soil geochemistry survey was conducted over a 37 square kilometer grid at 200 meter spacings. Geologic mapping, prospecting and sampling was conducted and over 500 samples have been analyzed using X-Ray Diffraction Analysis. A surface tTEM geophysical survey was completed in late 2024 across 38.4 kilometers (24 miles) of roads over the property, and an airborne geophysical survey will be completed in the spring of 2025. Drilling permits are in process with the maiden drill program planned for summer 2025.



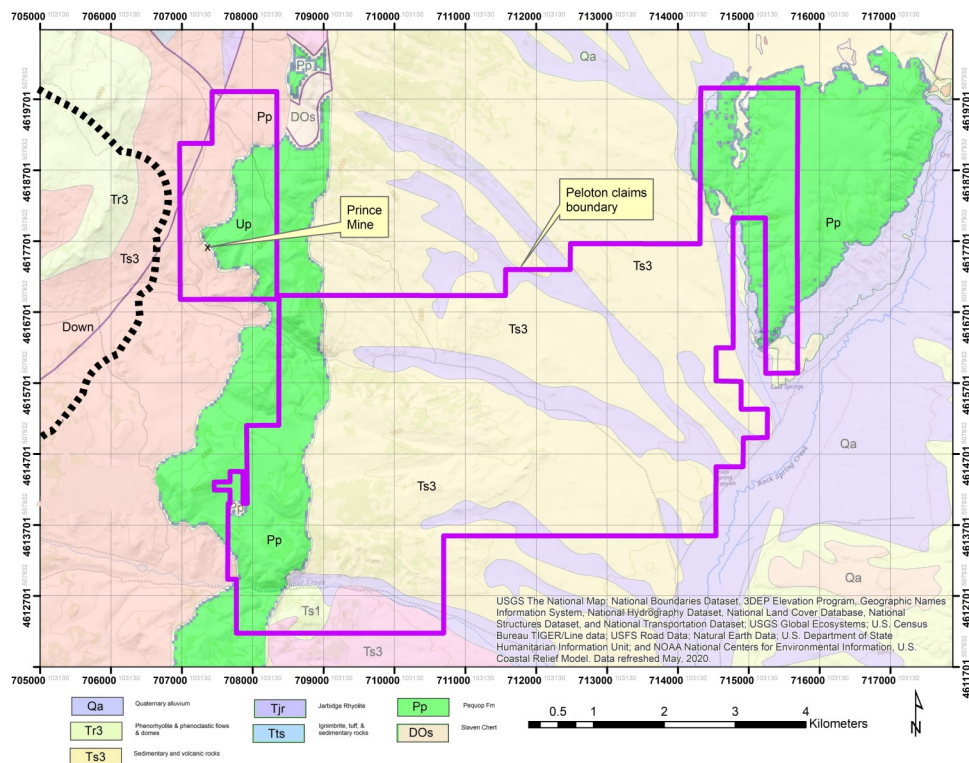
The hyperspectral data suggests a lithium bearing clay layer exists just below the surface across the property, which is supported by the results from the soil geochemistry survey. The tTEM survey results also support the existence of an underlying clay layer, and the X-Ray Diffraction analysis suggests the property is situated in a paleolake (historic lake) environment similar to Surge. Two types of lithium minerals and sources have been identified, one being evaporate type lithium minerals such as smectite, and the other being primary lithium magma minerals such as complex pegmatites

# Comparative Ground Position - Surge & Peloton

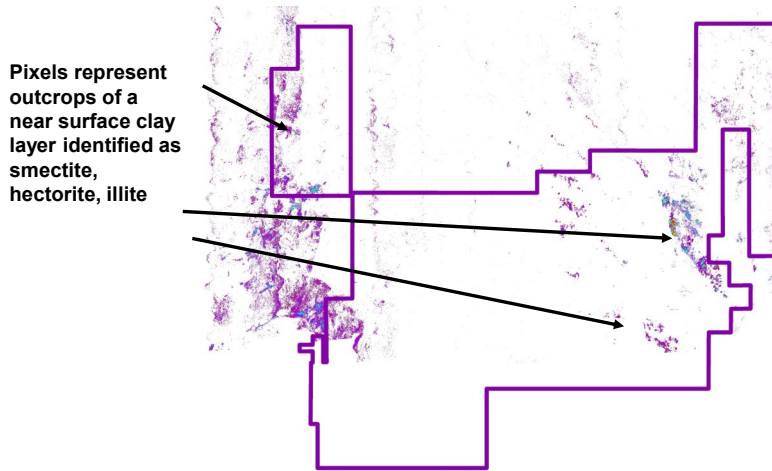


**Claims**

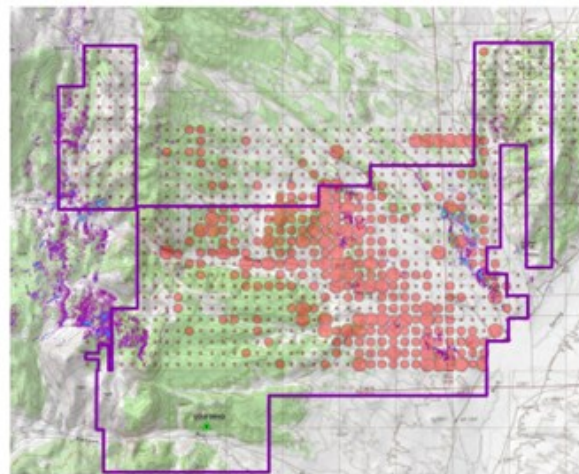
## Geologic Map & Claim Boundary Prospective Area Bounded by Slip Faults on the East and West



**Hyperspectral UV Data Shows  
Near Surface Clay Layer Outcropping Across Peloton Property**



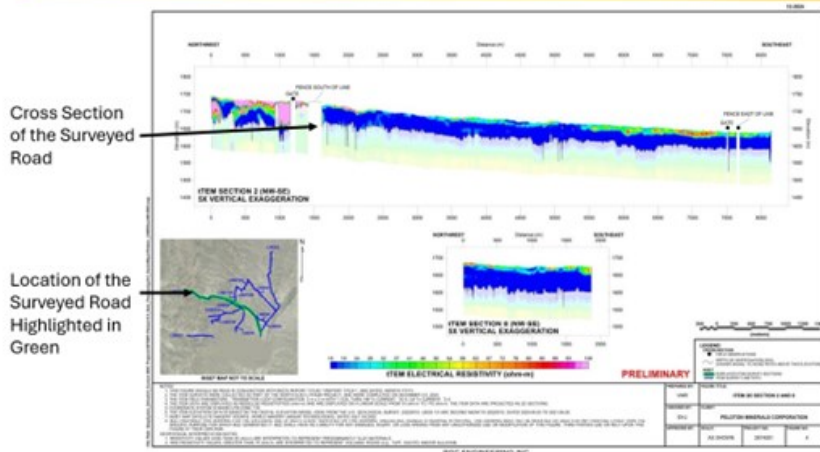
**Soil Geochemistry Shows  
Elevated Lithium Anomaly Over Approx. 27 sq km (10 sq miles)**



**Legend:**  
● 50 to 370 ppm Li

Background Lithium is 20 ppm

**tTEM Cross Section of the Texas Springs Canyon Road  
Shows Near Surface Layer Interpreted as Clay (Blue)  
Through the Heart of the Property over 7 km (4.4 miles) Strike Length**



## Capital Structure

- ◆ Exchange Listing  
CSE Symbol: PMC  
OTCQB Symbol: PMCCF
- ◆ Recent Share Price CAD \$0.09
- ◆ 52 week low-high CAD \$0.04-\$0.12
- ◆ Shares Outstanding 136.7 million
- ◆ Market Capitalization CAD \$12.5 million

## Investor Relations:

- ◆ Paul Teodorovici (514) 582-2282
- ◆ Edward (Ted) Ellwood (519) 697-2313

## Board & Management

- ◆ John O'Donnell, BA Econ. LLB, Chairman
- ◆ Edward Ellwood, MBA, President
- ◆ Eric Plexman, CFO, Corp. Secretary
- ◆ Paul Teodorovici, VP Bus. Development
- ◆ Richard Capps, PhD., Director
- ◆ Kent Britton, BA Econ., Director
- ◆ Cliff Wiebe, Director

Richard Capps, PhD is the Qualified Person ("QP") responsible for approving the technical information contained in this brochure.

## *District Scale Lithium Exploration*

- Same geologic environment as Surge
- The entire 37 sq km (14.25 sq miles) property is prospective
- 100 % owned
- No royalties outstanding
- Easily accessed
- Close to exploration infrastructure
- Cohesive Nevada exploration team

