

District Scale Lithium Exploration

- ◆ In 2023 Surge Battery Metals Inc. discovered the highest grade district scale lithium deposit in North America right beside claims held by Peloton in Nevada since 2018
- ◆ Systematic exploration shows Peloton's entire 37 sq. km, property is also prospective for a district-scale lithium deposit

Corporate Overview

Peloton's exploration portfolio includes the North Elko Lithium Project, comprised of 442 mining claims (37 sq km or 14.25 sq miles), and located immediately adjacent to the major lithium discovery made by Surge Battery Metals Inc. (Surge) in northeastern Nevada. Peloton also holds two Carlin style gold projects in northeastern Nevada and a non-controlling interest in a copper porphyry project near Butte, Montana.

North Elko Lithium Project

The North Elko Lithium Project (NELP) is located about 70 kilometers (43.5 miles) north-east of Wells, Nevada, and consists of 442 mineral claims covering 37 sq km (14.25 sq miles). Surge is immediately adjacent and tied onto the west portion of NELP and has made the highest grade district scale lithium discovery in North America with an Inferred Resource of 11.24 Mt of Lithium Carbonate Equivalent (LCE) at 3,010 ppm Lithium (Li).(ref: Surge Press Releases dated [September 24, 2024](#) and [July 24, 2025](#).)

Since the Surge discovery was made in early 2023, Peloton has conducted a systematic series of exploration programs on NELP and as data was collected, Peloton increased its ground position from an original 44 claims to a total of 442 claims currently or 37 sq km (14.25 sq miles). Surge holds 44 square km (17 sq miles) and Peloton and Surge are currently the two largest claim holders in the area.

Peloton's exploration work has included the reprocessing of data from an airborne hyperspectral survey the company had previously conducted over the area. A soil geochemistry survey was conducted over a 37 square kilometer grid at 200 meter spacings. Geologic mapping, prospecting and sampling was conducted and over 1,046 samples have been analyzed using X-Ray Diffraction Analysis. A surface tTEM geophysical survey was completed in late 2024 across 38.4 kilometers (24 miles) of roads over the property, and an airborne geophysical survey will be completed in the spring of 2025. **Drilling permits are in place and approved, with the maiden drill program planned for 2025.**



Lithium, critical and rare earth minerals in shallow claystone beds is the primary target at NELP, with the surface dimension of the NELP claystone outcrops estimated at some 35 square kilometers based on the geophysical surveys, surface mapping and sampling work. Peloton believes that the two properties (Surge and NELP) are situated in either the same paleolake environment or a very similar one. Peloton geologic mapping suggests that sampling at NELP to date is from bedded rocks higher in the stratigraphy.

This map displays the locations of Peloton and Surge claims within the Grand Staircase-Escalante National Monument. The monument's boundary is shown as a thick black line. The background is yellow, representing BLM land. Various areas are labeled 'Private' in black text. The 'Surge' claim is outlined in blue, and the 'Peloton' claim is outlined in purple. A legend in the bottom right corner identifies the colors: blue for Surge, green for Recent Peloton claims, and purple for Peloton. A scale bar at the bottom left shows distances in kilometers (0 to 4) and miles (0 to 4). A north arrow is located at the bottom center. The text 'BLM Energy, Minerals & Realty Management' is at the bottom right. The word 'Claims' is written in large black letters at the bottom right.

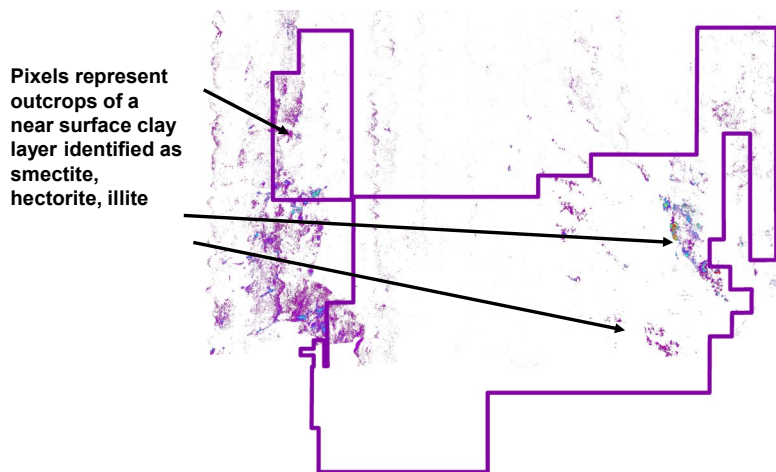
Geological map of the Peloton claims area, Yukon Territory, Canada. The map displays various geological units and features, including the Pelton claims boundary, the Pelton Mine, and the Pelton River. The map is overlaid with a grid showing coordinates (easting and northing).

Legend:

- Qa** Quaternary alluvium
- Tr3** Tertiary rhyolite and phreatic flows & domes
- Ts3** Tertiary sedimentary and volcanic rocks
- Tjr** Tertiary rhyolite
- Tjt** Tertiary ignimbrite, tuff, & sedimentary rocks
- Pp** Peltonite
- Do** Devonian

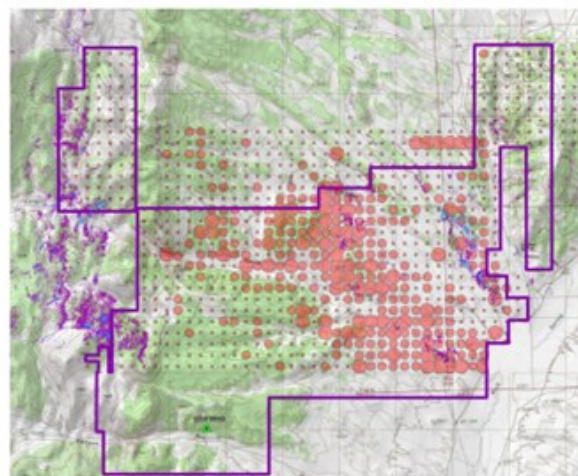
Scale: 0.5, 1, 2, 3, 4 Kilometers

Source: USGS The National Map; National Boundaries Dataset; 3DEP Elevation Program; Geographic Names Information System; National Hydrography Dataset; National Land Cover Database; National Structures Dataset; and National Transportation Dataset; USGS Global Ecosystems; U.S. Census Bureau TIGER/Line data; USFS Road Data; Natural Earth Data; U.S. Department of State Humanitarian Information Unit; and NOAA National Centers for Environmental Information; U.S. Coastal Relief Model. Data refreshed May, 2020.



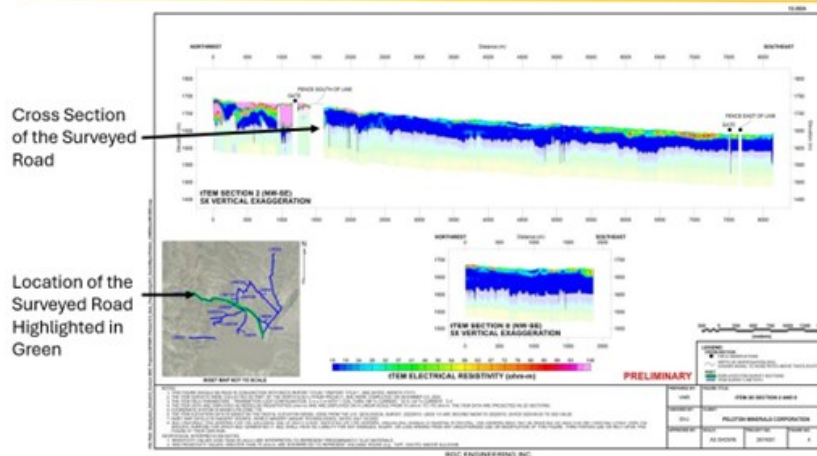
9

**Soil Geochemistry Shows
Elevated Lithium Anomaly Over Approx. 27 sq km (10 sq miles)**



10

**tTEM Cross Section of the Texas Springs Canyon Road
Shows Near Surface Layer Interpreted as Clay (Blue)
Through the Heart of the Property over 7 km (4.4 miles) Strike Length**



13

Capital Structure

- ♦ Exchange Listing CSE Symbol: PMC
 OTCQB Symbol: PMCCF
- ♦ Recent Share Price CAD \$0.09
- ♦ 52 week low-high CAD \$0.04-\$0.12
- ♦ Shares Outstanding 136.7 million
- ♦ Market Capitalization CAD \$12.5 million

Investor Relations:

- ♦ Paul Teodorovici (514) 582-2282
- ♦ Edward (Ted) Ellwood (519) 697-2313

Board & Management

- ♦ John O'Donnell, BA Econ. LLB, Chairman
- ♦ Edward Ellwood, MBA, President
- ♦ Eric Plexman, CFO, Corp. Secretary
- ♦ Paul Teodorovici, VP Bus. Development
- ♦ Richard Capps, PhD., Director
- ♦ Kent Britton, BA Econ., Director
- ♦ Cliff Wiebe, Director

Richard C. Capps, PhD, is the qualified person under National Instrument 43-101 that has approved the technical information contained within this brochure. Mr. Capps is the Company's Senior Geologist and a Director.

District Scale Lithium Exploration

- Same geologic environment as Surge
- The entire 37 sq km (14.25 sq miles) property is prospective
- 100 % owned
- No royalties outstanding
- Easily accessed
- Close to exploration infrastructure
- Cohesive Nevada exploration team
- **Drilling permits are approved**

